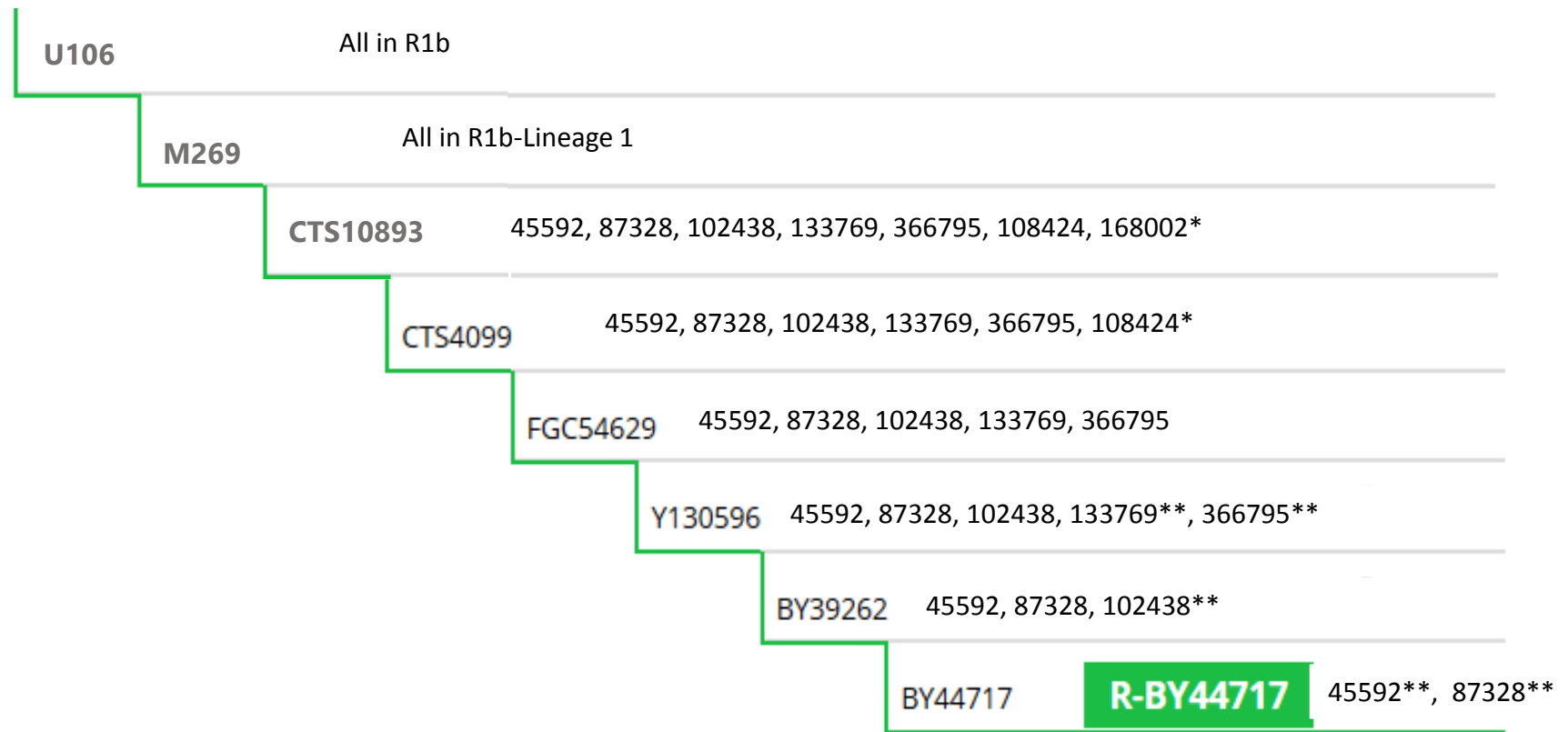


# Russell Project

## Haplogroup R1b-Lineage 1 Confirmed Haplotree

(based on those who have had any advanced SNP testing)



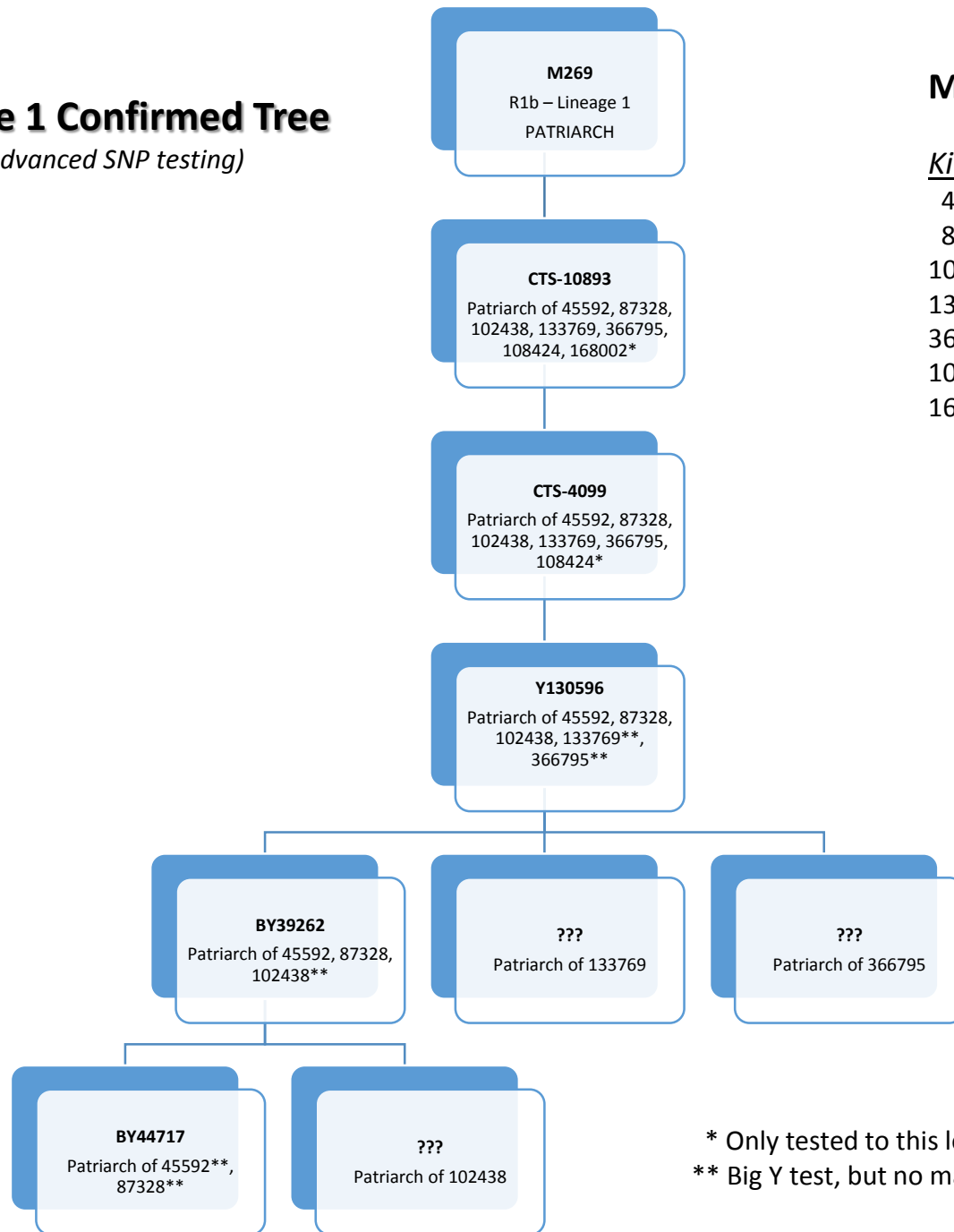
\* Only tested to this level, so more refined haplogroup unknown.

\*\* Big Y test, but no matches yet beyond this level so more refined haplogroup not yet known

# Russell Project

## Haplogroup R1b-Lineage 1 Confirmed Tree

(based on those who have had any advanced SNP testing)



## Most Distant Known Ancestor (MDKA)

### Kit

45592  
87328  
102438  
133769  
366795  
108424  
168002

### MDKA

Matthew Russell, b 1735, Northern Ireland; d 1819  
Robert Russell, b 1710; d in AL; m Mary Wilson  
George Russell, b 1775, Edinburgh, Scotland  
William Russell, b 1715, Bothwell, Lanarkshire, Scotland  
Robert Russell, b 1787, Coats, Lanarkshire, Scotland  
Matthew Russell, b 1735, Northern Ireland; d 1819  
William Russell, b 1761, Lanarkshire, Scotland; d 1829 PA

\* Only tested to this level, so more refined haplogroup unknown.  
\*\* Big Y test, but no matches yet beyond this level so more refined haplogroup not yet known